

SCHOOL EDUCATION PLAN & RESULTS

“Building Success – One Student at a Time”



School Education Plan
Principal: Natalie Morris
Trustees: Marc Beland and Clark McAskile

2017-2018 SCHOOL YEAR

School Education Plan Creation

Briefly describe how each of the following groups were included in the development of the School Education Plan.

A. Teachers

- Entire staff gathered in the gym and 6 table break out groups were created. Each group worked on identifying strategies for the school plan. Time was dedicated to identifying both school issues and strengths and how to best enhance learning opportunities and engagement for all members of the school community. Work began on May 18th and was continued on May 19th during PD day. A Google doc was also created so ongoing input regarding the plan could be provided and incorporated.

B. Support Staff

Support staff was present and involved in the May 18th planning and development sessions. They were not present on the 19th. They did meet again on May 24th and completed their input. They too were able to access the Google doc for input.

C. Students

- Focus groups have asked students what they would like to see improved at school and what additional learning opportunities they would like to have. This information is used in addition to that from staff and parents. As the plan rolls out students will have it shared with them in more student friendly terms.

D. School Council / Community

- School Council will review a draft and make suggestions for change and at the September AGM.

E. Other

- Staff will also have the completed draft made available to them electronically and in hard copy for additional review and suggestions prior to the end of the school year. Staff will be presented with the plan for review at the September school year start up staff meeting.
- A concerted effort was made to incorporate the findings and recommendations of this year's School review within the school plan and make it much more of an action plan than in previous years.

F. As additional data becomes available it will be incorporated into the school plan. (CAT summary data, Tell them from me data sets etc.)

School Datasets

Accountability Pillar Overall Summary
 3-Year Plan - May 2017
 School: 1709 Florence MacDougall Community School



Measure Category	Measure Category Evaluation	Measure	Florence MacDougall Comm Sch			Alberta			Measure Evaluation		
			Current Result	1 Year Year Result	1 Year 3 Year Average	Current Result	1 Year Year Result	1 Year 3 Year Average	Achievement	Improvement	Overall
Safe and Caring Schools	Excellent	Safe and Caring	93.3	97.0	97.2	89.5	89.5	89.3	Very High	Maintained	Excellent
Student Learning Opportunities	n/a	Program of Studies	82.1	85.4	81.4	81.9	81.9	81.5	Very High	Maintained	Excellent
		Education Quality	98.1	99.2	99.1	90.1	90.1	89.6	Very High	Maintained	Excellent
		Drop-Out Rate	n/a	n/a	n/a	3.0	3.2	3.3	n/a	n/a	n/a
		High School Completion Rate (8 wt)	n/a	n/a	n/a	77.9	76.5	76.1	n/a	n/a	n/a
Student Learning Achievement (Grades K-9)	n/a	PAT - Acceptable	n/a	n/a	n/a	73.8	72.9	73.4	n/a	n/a	n/a
		PAT - Excellence	n/a	n/a	n/a	19.4	18.8	18.6	n/a	n/a	n/a
Student Learning Achievement (Grades 10-12)	n/a	Diploma - Acceptable	n/a	n/a	n/a	85.0	85.2	85.1	n/a	n/a	n/a
		Diploma - Excellence	n/a	n/a	n/a	21.0	21.0	20.5	n/a	n/a	n/a
		Diploma Exam Participation Rate (4+ Exams)	n/a	n/a	n/a	54.9	54.6	53.1	n/a	n/a	n/a
		Subsequent Scholarship Eligibility Rate	n/a	n/a	n/a	62.3	60.8	60.8	n/a	n/a	n/a
Preparation for Lifelong Learning, World of Work, Citizenship	n/a	Transition Rate (6 wt)	n/a	n/a	n/a	57.9	59.4	59.3	n/a	n/a	n/a
		Work Preparation	88.2	90.0	91.5	82.7	82.6	81.9	Very High	Maintained	Excellent
Parental Involvement	Excellent	Parental Involvement	97.7	95.9	96.1	81.2	80.9	80.7	Very High	Maintained	Excellent
Continuous Improvement	Excellent	School Improvement	88.9	85.0	89.1	81.4	81.2	80.2	Very High	Maintained	Excellent

FLORENCE MACDOUGALL COMMUNITY SCHOOL

Florence MacDougall Community School - Grade 1 to 3 March 2017								
Grade	Number of Students Writing	Number of Students Enrolled	Percent of Students At or Above Stanine 5 (Canadian Norm is 60% Based on Number Writing)			Percent of Students At or Above Stanine 4 (Canadian Norm is 77% Based on Number Writing)		
			Number of Students	Based on # Writing	Based on # Enrolled	Number of Students	Based on # Writing	Based on # Enrolled
1	99	103	38	36%	35%	49	49%	48%
2	99	103	49	49%	48%	54	55%	52%
3	101	103	51	50%	50%	55	54%	53%
4								
5								
6								
7								
8								
9								
School Total	299	309	136	45%	44%	158	53%	51%

School Education Plan and Results

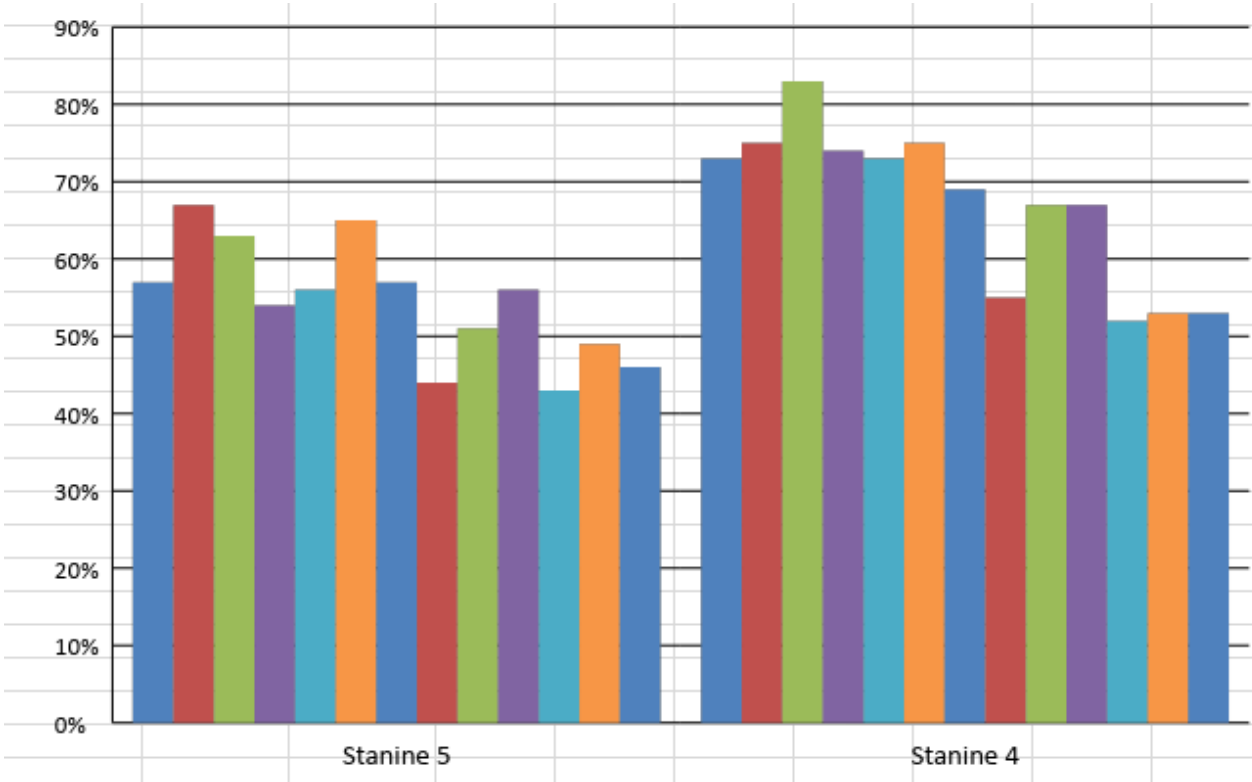
<p>GOAL #1: EVERY STUDENT IS SUCCESSFUL</p> <p>GOAL #2: QUALITY TEACHING AND SCHOOL LEADERSHIP</p> <p>GOAL #3: EFFECTIVE GOVERNANCE</p>
<p>DIVISION PRIORITIES: #1 All students will improve reading, writing and digital literacy skills #2 All students will improve numeracy skills through practical applications of curricular outcomes #3 All students will be increasingly engaged in learning environments to improve achievement and citizenship skills</p>

SCHOOL GOALS

<p><i>School Goal 1: Students from grade 1 to 3 will improve their level of reading as measured by the 2017-2018 cat 4 scores indicating those at stanine 5 in comparison to those at that level in 2016-2017</i></p>
<p>Strategies:</p> <ul style="list-style-type: none"> • Collaborative Team Meetings • Structured Guided Reading in all classrooms
<p>Target and Measurement Tools:</p> <ul style="list-style-type: none"> • F&P BENCHMARKS. • Grade level writing prompts. • SLAs for grade 3 students • CAT 4 for all grade levels
<p>Resources:</p> <ul style="list-style-type: none"> • Increase the number of Level A guided reading packs • Two LLI teaching assistants. • RTI Meeting time- one hour every week- grade level teams rotate through
<p>Timeline:</p> <ul style="list-style-type: none"> • Ongoing
<p>Results:</p>

FORT VERMILION SCHOOL DIVISION
Students Reading At or Above Grade Level
 CAT4 Results March 2018

Florence MacDougal Community School - Grade 1 to 3								
Grade	Number of Students Writing	Number of Students Enrolled	Percent of Students At or Above Stanine 5 <i>(Canadian Norm is 60% Based on Number Writing)</i>			Percent of Students At or Above Stanine 4 <i>(Canadian Norm is 77% Based on Number Writing)</i>		
			Number of Students	Based on # Writing	Based on # Enrolled	Number of Students	Based on # Writing	Based on # Enrolled
1	94	102	34	36%	33%	43	46%	42%
2	97	102	46	47%	45%	45	46%	44%
3	93	98	45	48%	46%	60	65%	61%
4								
5								
6								
7								
8								
9								
School Total	284	302	125	44%	41%	148	52%	49%



Comments:
 Unfortunately, we did not see the growth we were hopeful for in the area of reading proficiencies. We are very excited about this coming year; all of our teachers will administer the common literacy assessment and establish interventions to provide direct instruction in the areas of their deficiencies. We have revamped our resource teacher's position to

ensure she is able to provide interventions to our grade 1-3 students every day. As well, three of our staff will be trained in the EMPOWER program and we will be implementing the program by the end of November.

School Goal 2: To develop active citizens and learners through a healthy active school community and environment that encourages student ownership, engagement and participation in academics, student and staff directed clubs and activities.

Strategies:

- Establishment of a full nutrition program will be in place in early September free lunch for all students.
- Active student council.

Target and Measurement Tools:

- Soft measures- parent and student focus groups, feedback during school council meeting and student council.
- Participation in HASS session in October
- School lunch surveys for families re usage and menu offerings.

Resources:

- Scheduled student council meetings
- Ever active organization, survey, Alberta Health services.
- \$141,000.00 from Alberta Education
- HLPS kitchen facility
- Staff and student support

Timeline:

- Ongoing

Results:

Accountability Pillar Overall Summary
Annual Education Results Reports - Oct 2018
School: 1709 Florence MacDougall Community School



Measure Category	Measure	Florence MacDougall Comm Sch			Alberta			Measure Evaluation		
		Current Result	Prev Year Result	Prev 3 Year Average	Current Result	Prev Year Result	Prev 3 Year Average	Achievement	Improvement	Overall
Safe and Caring Schools	Safe and Caring	92.7	93.3	95.6	89.0	89.5	89.4	Very High	Maintained	Excellent
	Program of Studies	65.9	82.1	81.8	81.8	81.9	81.7	Very Low	Declined	Concern
Student Learning Opportunities	Education Quality	93.9	98.1	98.5	90.0	90.1	89.9	Very High	Maintained	Excellent
	Drop Out Rate	n/a	n/a	n/a	2.3	3.0	3.3	n/a	n/a	n/a
	High School Completion Rate (3 yr)	n/a	n/a	n/a	78.0	78.0	77.0	n/a	n/a	n/a
Student Learning Achievement (Grades K-9)	PAT - Acceptable	n/a	n/a	n/a	73.6	73.4	73.3	n/a	n/a	n/a
	PAT - Excellence	n/a	n/a	n/a	19.9	19.5	19.2	n/a	n/a	n/a
Student Learning Achievement (Grades 10-12)	Diploma - Acceptable	n/a	n/a	n/a	83.7	83.0	83.0	n/a	n/a	n/a
	Diploma - Excellence	n/a	n/a	n/a	24.2	22.2	21.7	n/a	n/a	n/a
	Diploma Exam Participation Rate (4+ Exams)	n/a	n/a	n/a	55.7	54.9	54.7	n/a	n/a	n/a
	Rutherford Scholarship Eligibility Rate	n/a	n/a	n/a	63.4	62.3	61.5	n/a	n/a	n/a
Preparation for Lifelong Learning, World of Work, Citizenship	Transition Rate (6 yr)	n/a	n/a	n/a	58.7	57.9	59.0	n/a	n/a	n/a
	Work Preparation	76.2	88.2	90.9	82.4	82.7	82.4	Intermediate	Declined	Issue
Parental Involvement	Citizenship	95.4	100.0	99.3	83.0	83.7	83.7	Very High	Maintained	Excellent
	Parental Involvement	96.3	97.7	96.0	81.2	81.2	81.0	Very High	Maintained	Excellent
Continuous Improvement	School Improvement	68.2	88.9	88.9	80.3	81.4	80.7	Low	Declined	Issue

Comments:

We are concerned that staff (who are the only contributors to this survey. They are obviously unhappy with the quality of program of studies being covered, work preparation and are unsatisfied with school improvement. Kim and I have already provided staff an opportunity to share their concerns in an anonymous format and will continue throughout the school year. We will also meet with the teachers to discuss how the questions are answered and how we, as a school need to move forward.

School Goal 3: Technology Integration and use will be expanded and utilized within all K to 3 classrooms.

Strategies:

- Establish an internal technology lead teacher group. These individuals offer after school and elbow PD where possible and join others' classrooms and model use of technology and troubleshoot.

Target and Measurement Tools:

- Classroom visit forms will indicate and graph occasions when technology is visibly in use.
- Shelly K's edtech visits. She keeps a schedule and log
- Check Chromebook sign out sheet
- Google classroom charts student usage charts
- Self-reports - indicate on a weekly log how we are using tech
- Donald's weekly computer classes
- Checklist of skills that students would have at the end of each grade level regarding technology - example - end of grade 3 - compose and send email, navigate google classroom, create and share a google doc, create a slides presentation with 5 slides ect.

Resources:

- Lead staff
- Designated PD time during the school day for all staff
- \$6000.00 to \$8000.00 for sound field systems.

Timeline:

- Ongoing

Results:

-

Comments:

Students and staff are increasingly gaining comfort when utilizing technology as a tool to enhance instruction in the classroom. We will be connecting with SNCS this coming year and teaming up with a grade three class to help continue the growth and ensure the grade three class has a tech-leadership opportunity.

Professional Development Plan

Briefly describe your school professional development plan in relation to each of the following items.

A. Creation of the Professional Development Plan

- Annual staff discussion identifies areas of school need. During team planning time common concerns are identified and shared with administration. Staff is also surveyed and a plan incorporating these elements put together and shared with staff.

B. Disbursement of Dollars

- A staff fund is established to enable individuals to attend self-directed PD as linked to their PGPs. This fund is also accessed to support ongoing whole staff initiatives as well. A maximum of \$500.00 is available to a staff member to apply towards all costs incurred through a PD opportunity.

C. Individual Staff Professional Development

- Staff PGPs will identify personal growth opportunities and goals as linked to the school and division education plans.

D. Education Plan Associated Professional Development

- BL training will be accessed through the continuing role of BL coordinators as maintained by the school division.
- Numeracy support will be accessed through the newly created grade K-6 numeracy coordinator role as developed by the school division.
- Additional dollars are held by administration to apply toward whole school PD as need arises.

June

- Review PD plan and school plan for next school year.

August

- Math Pd to review and identify strategies. Inclusive Education review and workshop on inclusion strategies

September

- Numeracy PD in September with Jason MacDonald. Also begin after school 30 minute PD sessions begin, set schedule for year and continue throughout begin with new IPP online development tool session..

October

- PD in October with Jason Macdonald re numeracy. After school PD on report card comments late October.

November

- November after school session with Heather MacDonald re guided reading. November PD on numeracy with Jason MacDonald .

December

- PD numeracy on December 8th with Jason MacDonald and 30 min after school session Google Docs.

January

- January PD with Heather MacDonald re guided reading. After school Google docs/classroom

February

- PD Numeracy topic and after school Google docs/classrooms

March

- PD Numeracy and writing topic

April

- PD writing topic

May

- School planning

June

-

School plan and report on strategies success/challenges

Communication Plan

Briefly outline your school communication plan in relation to parents, the community, staff, students and stakeholders.

August

- School website, facebook announcements, newspaper ads, postings on school doors, school sign. Additional in school bulletin boards and ensure that support staff are added to all electronic communications lists and contacts.

September

- Newsletters, school website, School Sign, Staff meetings, Student and parent focus groups, school events. Meet the staff night, books and blankets, education café, book swap. Monthly assembly Daily student agenda.

October

- Monthly assembly, newsletters, books and blankets, after school clubs, facebook ,school website. Daily student agenda. Student focus group.

November

- Report cards and Parent teacher interviews, school events facebook, newsletters, assembly, books and blankets. Parent and student focus groups.

December

- Christmas Concert, monthly assembly, newsletter, student focus group, daily agenda, books and blankets. Facebook.

January

- Student focus group., school council, books and blankets, newsletters.

February

- Parent Teacher interviews and progress reports. Newsletters, books and blankets, school council meeting. Student focus group

March

- School council meeting, daily student agendas, facebook. Student and parent focus groups.

April

- Report cards, newsletters, Facebook, books and blankets School council meeting.
- Student focus group.

May School events, books and blankets, track and field, public speaking, daily agendas, newsletters.

- School council meeting, parent and student focus group.

June

- Daily student agendas, school events. Teddy Bear Picnic, Facebook, newsletters, student focus group. Report cards

Monitoring Calendar

In the space provided, please outline what steps you plan to take to monitor your School Education Plan throughout the year.

September

- Plan will be shared at School Council AGM. Brief review at first staff meeting .Also uploaded to shared staff file and placed on school web page.

October

- PD as related to ed plan will take place, CAT data reviewed.

November

- Staff report from student wellness/healthy active schools and sharing of data from all focus groups help thus far.Re examine how it links to school plan and where targets etc may require adjustments.

December

- Review with school council and seek input.

January

- Review school PD plan, how has it supported ed plan. Look at where PGPs have helped and where we still need to develop and grow. Staff meeting.

February

- Budget review and update, wellness and student activity participation review.

March

- Literacy activity and goals review. Additional supports?

April

- Staff meeting discussion school plan

May

- School planning process whole staff to develop next year's plan. Review all available and current data

June

- Review final plan and identify any additional supports required.

As the representative of the School Council at this school, I hereby give my endorsement to this School Education plan for the 2017-2018 school year. I hereby acknowledge that the school council has had opportunity to provide feedback on this plan and support it as is here presented.

School Council Chair

Date

As Principal of this school, I hereby submit our School Education Plan for the 2017-2018 school year. This plan has been created in collaboration with all staff at this school, as well as with the school council.

Principal

Date